

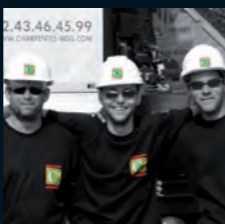
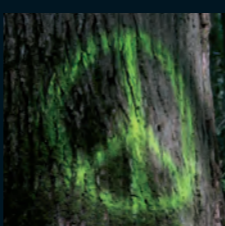


PEFC certification «For a sustainable resource...»

The choice of the materials and components of a building is no longer based merely on functionality, quality and price. Because of the priority of sustainable development, design must take into account new criteria such as environmental protection, life cycles of materials and their energy impact. Wood, a natural material, is a renewable and inexhaustible resource if it is grown in properly managed forests. By giving preference to purchasing French wood, we are enabling our customers to make a concrete contribution to reducing greenhouse gas emissions. This is why in 2008 Charpenté Cénomane became the first Wood Construction company in France to set up an internal PEFC control chain, guaranteeing our customers a sustainable wood resource for a responsible purchase.

Carbon footprint «An always-negative carbon footprint...»

Charpenté Cénomane decided to take understanding and reduction of its ecological footprint to a new level, in 2009 becoming the first French Wood construction company to measure the carbon footprint of its business. In 2014, a new «Carbon Footprint» study (complying with the ADEME method) showed that by sustainably exploiting more than 2000 m3 of wood in roof frames and wooden structures on its sites (90% of which are eco-certified) by buying 100% renewable electricity, the company showed a «negative carbon footprint» before any corrective action. With the benefit of our long experience, we are developing a programme for measuring the «Site carbon footprint» from these data. Today, we have thus become one of the only wood construction companies in France able to give its public or private project owner customers a quantified provisional carbon footprint of its work at the time of the quote or measured at the end of the construction project.



COMPANY CHARTER

Our vocation
Designing, building and erecting living spaces well framed in wood. We mobilise all our strengths and skills to deliver to our public and private customers constructions that guarantee them a high satisfaction level both technically and aesthetically, and to do this within the scheduled time.

Our ambition
To be a reference in the development of wood for construction in France. To develop a cost-effective business and respect the environment, people and our building heritage.

Our mindset
We continually seek to broaden the rational use of wood, the only living, warm and infinitely renewable building material. We aim for professional fulfilment through the use of powerful techniques and services with the best possible safety for everybody.

Our values

- Team spirit
- Respect for traditions and differences
- Professional conscience and a culture of work well accomplished.
- We strive to reduce the environmental impact of our business.
- We continually aim to be right first time.
- We carry out our daily work against a background of permanent and sustainable progress.
- We are continually incorporating new technologies and practices to give customer satisfaction.

All of the Charpenté Cénomane team.

WORK DIFFERENTLY

This logo symbolises our voluntary approach and marks our commitment with our outside partners and internally to developing ecological working conditions both from a physical point of view and in working relations. This approach adopted by everybody in the company is part of our policy of sustainable development and corporate responsibility. Beyond being a symbol and a commitment, it applies to actual practices (investment, training and work organisation). We attach great importance to incorporating this approach in our practices, and especially in our business relations internally and with our partners. Working conditions and safety are central to our thinking in how we run the company. We are convinced that there are no sustainable profits in a company if it does not respect those who realise these profits. In a business and in a market with a reputation for toughness, showing that another approach is possible is very important to us. We have invented nothing, simply adapted.

Human resources and continuous improvement «Quality-driven management»

The company is thoroughly committed to continuous progress, mobilising all the skills of its employees to come up with the best practices, reproduce them, remain continually aware of our difficulties and to pinpoint ways for improvement, implement them and monitor them. Our approach in the service of customer satisfaction equally well demonstrates and supports the passion we have for our industry.

Bien charpenté®



charpentes-bois.com



Charpenté Cénomane - ZA Belle Croix - 72510 Requeil
Tél : 02.43.46.45.99 - Fax : 02.43.46.57.72 - contact@charpente-cenomane.com
charpentes-bois.com



Entreprise du Patrimoine Vivant
L'excellence des savoir-faire français



Individual and collective housing

With our 20 years' experience in wood construction, we are able to design and deliver all types of housing, extensions or roof extensions, from the architect-designed individual house to large-scale collective and social housing programmes. The company is not limited by compliance with thermal, acoustic or air tightness regulations. We have well-based references in «mixed Wood-Concrete» or multi-storey construction up to ground +6.

«CUBE 45» HOUSE - BM ARCHITECTURE AGENCY - SO BOIS - 1ST NATIONAL PRIZE FOR WOOD CONSTRUCTION 2013

Competing, designing, building

We regularly train teams with leading architects from recognised design firms to be able to respond to «Design and Construction» projects. We are a WOODEN BUILDING SHELL company, acting as agents in training and managing a team of companies for our sub-contracted lots. Together, this team, driven by common interests, devises economic and virtuous solutions to a schedule or set of specifications to cover the Project Owner's requirements.



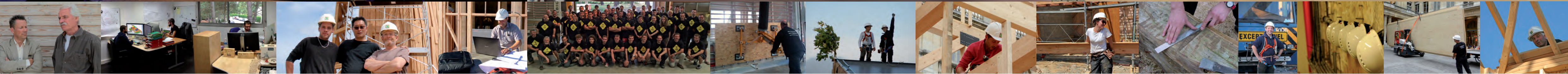
DESIGN COMPETITION FOR THE PREFABRICATED CONSTRUCTION OF THE LYON OPERA - ARCHITECTE ADELA CIUREA - BE WOOD JACQUES ANGLADE.

Public access buildings

We design and build wooden or mixed «well framed» structures, from the simplest to the most complex, in the shortest possible time. This is made possible by our know-how and by the use of powerful tried and tested technologies. Computer aided design (CAD), K2i numerical machining centre, installed in over 2000 m2 of workshop area.

By complying with the Construction Bois 21 reference standard, annual SOCOTEC audit, EC marking and our QUALIBAT qualifications, we are able to guarantee our customers high quality and reliable products complying with the current standards, for building public educational or cultural facilities and public access buildings in all categories.

SPECIAL CAMPUS MONTREUIL (93) - OVERALL BUDGET 5M€ - ATELIER MEANDRE/AGENCY CHRISTIAN HACKEL

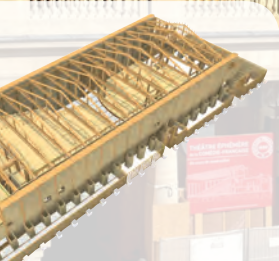


TEAM SPIRIT - QUALITY - COST - DELIVERY TIME - PROFESSIONALISM - EFFICACY - CHALLENGES - CONTINUOUS IMPROVEMENT - CREATIVITY - SAFETY - STANDARD - PROCESS CONTROL - LOVE OF THE PROFESSION - DYNAMISM - RESPECT FOR ENVIRONNEMENT - TRADITION



Event industry

We regularly build venues for entertainment and cultural activities. Among our projects: theatres, circus tents, stands, exhibitions for ZINGARO and YANN ARTHUS BERTRAND, art works with internationally famous artists such as Tadashi KAWAMATA. Our roof frames can be highly mobile, as shown by the exemplary construction of the Théâtre Ephémère de la Comédie Française at the Palais Royal in Paris, followed by its dismantling for the construction (after modification) of the Opéra des Nations in GENEVA.



EPHEMERE COMEDIE THEATRE PARIS (75) - ADAM CHABUS PERRIN - ACMH - BE BOIS JACQUES ANGLADE AND RAÏNE BE

Integrated design department «To stay in control ...»

Using the most powerful IT methods (Imac and CADWORK for CAD or MD BAT and ACORD BAT for structure calculations), we draw all the wooden components for all projects in 3D for digital cutting. We are involved upstream in the eco-design and development of projects (dimensioning and design of structures, calculation of the environmental and thermal quality of the shell) for all types of building. If necessary, we coordinate the various lots and work supervision including general contracting.

THE CHANNEL CIRCUS TENT CALAIS (62) - AGENCE CONSTRUIRE PARIS - PATRICK BOUCHAIN ET LOÏC JULIENNE

Heritage buildings and Historic Monuments

We conserve and pass on to younger generations respect and love for the job, with the know-how and traditional skills needed in the restoration of ancient roof trusses, making grafts or complex assemblies by hand. The company is regularly host to compagnons («guild craftsmen») who come to perfect their knowledge while travelling round France. Doing a job with passion means knowing how to repair the ravages of time to give new life to cathedrals, churches, chateaux, mansions or convents, the heritage of several centuries.

RECONSTRUCTION OF WOODEN RAFFRAME - SATELITE S.A.T. N°3 AT LA POUËZE (49)

